

## ECHOES 5000

POLE MOUNTED OR TOWED  
SUB-BOTTOM PROFILER SOLUTION

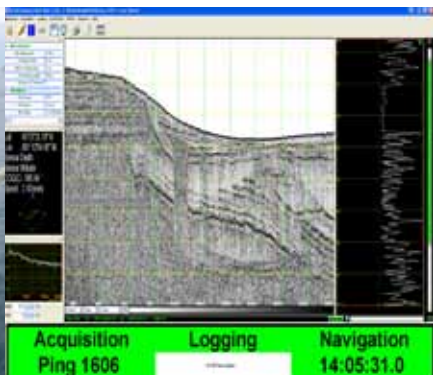
ECHOES 5000 is an energy efficient and compact SBP system with an impressive bandwidth, allowing high resolution surveys in various operating conditions (lake, shallow & deep waters). Provided with DELPH SEISMIC acquisition software, it becomes a full-feature survey tool, easy to use, with a perfect balance between penetration and resolution.

### FEATURES

- Full package: Fully integrated Towfish, PowerSupply and software
- Flat-spectrum, high power CHIRP emission
- 12.5 cm resolution & 213 dB equivalent acoustic level
- Up to 6000m depth rated

### BENEFITS

- Versatile towfish: pole mounted or towed
- Very low profile distortion
- Unparalleled data quality with good penetration
- All survey operating conditions



### DELPH SEISMIC ACQUISITION

- CHIRP selectable
- 24 bit raw data
- Segy 32 bits floating point
- Multi-ping management
- GPS and motion sensor interface
- Real-time waterfall

Photos courtesy of CNRS



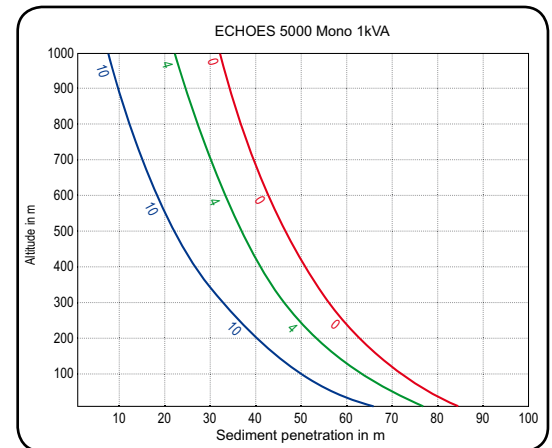
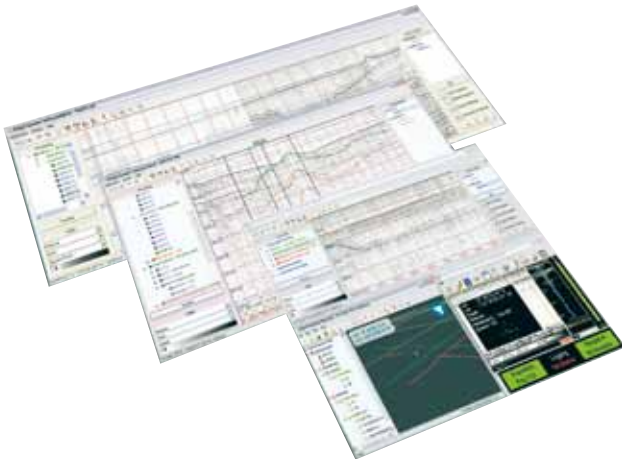
**APPLICATIONS** • Environmental, ports, lakes and waterways survey • Pre-dredging survey  
• Buried objects detection and archaeology • Windfarms & renewable energies

# ECHOES 5000

## TECHNICAL SPECIFICATIONS

### PERFORMANCE

<b>Operational depth</b>	From shallow water to full ocean depth
<b>CHIRP center frequency</b>	5 kHz
<b>Transducer type</b>	Janus Helmholtz
<b>Antenna configuration</b>	1 or 3 transducers
<b>Frequency range</b>	2 - 6 or 2 - 8 kHz
<b>Resolution</b>	up to 12.5 cm
<b>Pulses</b>	User selectable and defined
<b>Bandwidth</b>	4000 or 6000 Hz
<b>Dimensions ( L x l x H)</b>	1835 x 700 x 800 mm
<b>Weight in air/water</b>	83 kg / 25 kg (300m depth rated)
<b>Typical mount</b>	Fish ( either towed or pole mounted )
<b>Depth rating</b>	30m / 300m / up to 6000m
<b>Transmission Power</b>	1 kVA



For clay-like sediment on rock bed