



ECHOES 3500

HULL-MOUNTED SEDIMENT SOUNDER SOLUTION

ECHOES 3500 is the reference full ocean depth solution for oceanographic vessels. Provided as a turnkey survey solution with DELPH SEISMIC ACQUISITION, it turns into a full-feature survey tool with DELPH SEISMIC INTERPRETATION productivity software.

FEATURES

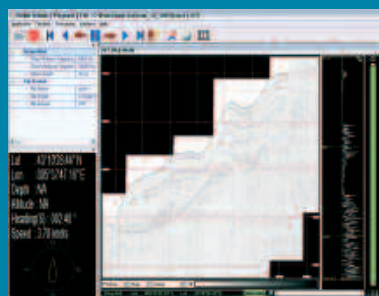
- Full package: antenna, rugged rack, PC and software
- Flat-spectrum, high-directivity CHIRP antenna emission
- 22 cm resolution
- Databasing of all information

BENEFITS

- Turnkey vessel equipment solution
- Very low profile distortion
- Unparalleled data quality at full ocean depth
- Ready for DELPH SEISMIC INTERPRETATION



Courtesy of Ifremer



DELPH SEISMIC ACQUISITION

- CHIRP selectable
- 24 bit raw data
- Segy 32 bits floating point
- Multi-ping management
- GPS and motion sensor interface
- Real-time waterfall



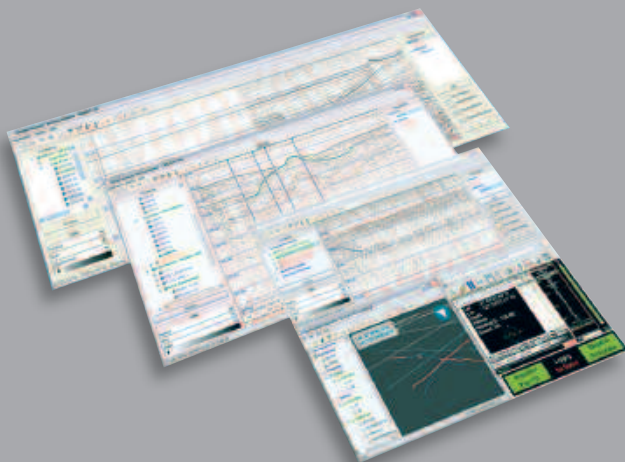
- #### APPLICATIONS
- Full ocean depth survey
 - Defense, geotechnical and cable route investigation
 - Modernization and refurbishment programs

ECHOES 3500

TECHNICAL SPECIFICATIONS

PERFORMANCE

Operational depth	Full ocean depth
CHIRP center frequency	3500 Hz
Transducer type	Tonpilz
Antenna configuration	7 transducers
Frequency range	1800 – 5200 Hz
Resolution	22 cm
Pulses	User selectable and defined
Bandwidth	3400 Hz
Dimensions (Ø x H)	1200 x 400 mm
Weight in air	150 kg
Typical mount	Hull mounted
Power	3 kW nominal, extendable to 6 and 9 kW



Make the most of the ECHOES system and improve productivity with DELPH SEISMIC INTERPRETATION :

- Display and process long survey lines
- Perform easy profile correlations
- Eliminate interpretation bottlenecks
- Produce faster survey reports

Please refer to DELPH SEISMIC INTERPRETATION brochure