



DELPH INS

INERTIAL NAVIGATION SYSTEM POST-PROCESSING SOFTWARE

DELPH INS is a post-processing and batch productivity tool for the IXSEA INS product range: PHINS, ROVINS, HYDRINS, LANDINS, AIRINS. Powerful data editing and processing functions together with data export capability make this tool ideal for quick and easy navigation enhancement.

FEATURES

- Forward/backward data processing, edit/modify data, add/remove aiding sensors...
- Powerful export tools
- Intuitive and user-friendly man machine interface (MMI)
- Several versions tailored to market applications

BENEFITS

- Complete set of dedicated tools available for navigation improvement and QA/QC analysis
- Quick and easy integration in processing workflow
- Does not require in-depth INS knowledge
- Cost effective and scalable solution for all applications.



APPLICATIONS • ROV and AUV navigation • Subsea construction surveys • Metrology • Hydrographic surveys
• Pipeline out of Straightness surveys • Road and railway surveys • Lidar surveys

DELPH INS

INERTIAL NAVIGATION SYSTEM POST-PROCESSING SOFTWARE

TECHNICAL SPECIFICATIONS

Minimum workstation configuration

Microsoft Windows XP SP2, Vista, WINDOWS 7
Pentium IV - 2 GHZ - 1 Gb RAM

Input file formats

Industry standard protocols (USBL, LBL, DVL, etc)
external or post-processed GPS
(\$GPGGA, \$GPGST, \$GPZDA)

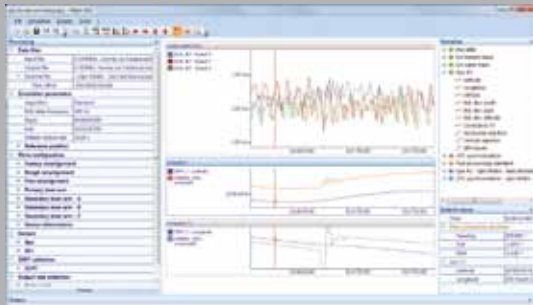
Output file formats:

Industry standard file format
(KML, ESRI Shapefile, GML)
Plain text file
Specific file format on request

TECHNICAL SPECIFICATIONS

Application	IXSEA product	GPS	DVL	DVL water track	Depth	Ac. Position	Range	ZUPT	Odometer	Event markers	Import data	Expert
HYDROGRAPHY	HYDRINS, PHNS	X									X	
LAND	LANDINS	X						X	X	X	X	
SUBSEA	ROVINS, PHINS 6000, PHINS	X	X	(1)	X	X	(1)	(1)			(1)	(1)
AIRBORNE	AIRINS	X						X		X	X	

(1) Optional Advanced subsea version



DELPH INS



Courtesy of IFREMER/CNRS

Specifications subject to change without notice