

## IXSEA partners Plymouth based GEOSA to show off its 4<sup>th</sup> Generation Side Scan Sonar – SHADOWS

IXSEA chose the historic naval port of Plymouth to demonstrate the **SHADOWS** Seabed Mapping Sonar with GEOSA, an Oceanographic and Marine Innovation Support Company.



The two week mobilisation which included IXSEA GAPS, pre-calibrated USBL, saw more than fifteen companies from European based Offshore and Hydrographic survey industries witness the real time data acquisition and processing capabilities across its full 600m swath coverage. IXSEA demonstrated route survey, environmental and archaeological recognisance and detailed wreck surveys which were well received by industry representatives.

Richard Parkinson, Director IXSEA Offshore said: “Like many marine equipment manufacturers before us, IXSEA has utilised the diverse geological, bathymetric and anthropogenic artefacts available in Plymouth to demonstrated the step change in seabed mapping that SHADOWS delivers.

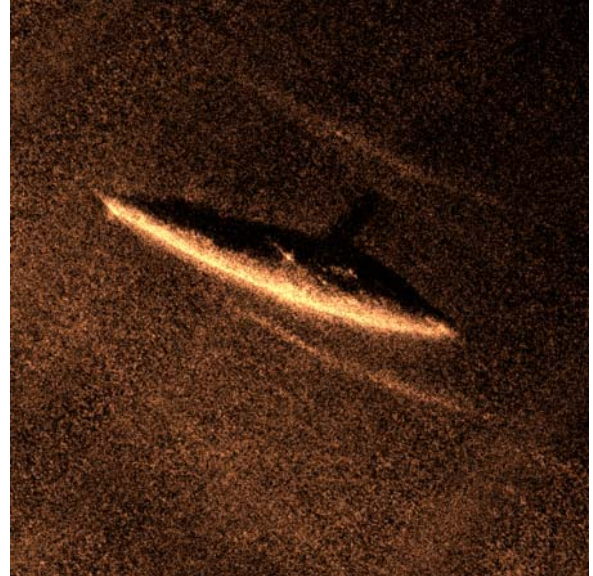
“Working with GEOSA’s highly professional and experienced team onboard the RV Terschelling was a real pleasure. The plans for GEOSA’s Marine Innovation Park are exciting and underline their commitment to innovation in our business sector. We look forward to making use of the facilities again in the future.”

Based in Oreston-Plymouth at the mouth of the Plym, GEOSA currently provides permanent employment for six people and accumulated over 1000 man days of employment through its project based activity in 2008. GEOSA is in the final stages of the redevelopment of its site, which will see a new 2.7 acre quayside facility with carnage and dedicated marine assets. Nigel Boston Chairman of GEOSA said: “We hope to continue delivering a ‘space’ to incubate, encourage and stimulate the growth of marine technology through modular based business units available for a few days or on a permanent basis.”

Data Samples gathered over the demonstration period



New discovery 'Mined' Submarine in 80m of water UKCS



The A7 Mini Submarine South of Plymouth Sound



Artists Impression of GEOSA planned development at the Old Timber Yard on the Plym

**About IXSEA**

IXSEA designs, manufactures and markets navigation and positioning systems based on its

23<sup>rd</sup> June 2009



state of the art fibre optic gyroscope technology, along with a complete range of seabed mapping solutions.

**Further information:**

Anne Berg

Public Relations Manager

IXSEA

Email: [anne.berg@ixsea.com](mailto:anne.berg@ixsea.com)

Tel: +33 (0)6 13 49 05 66